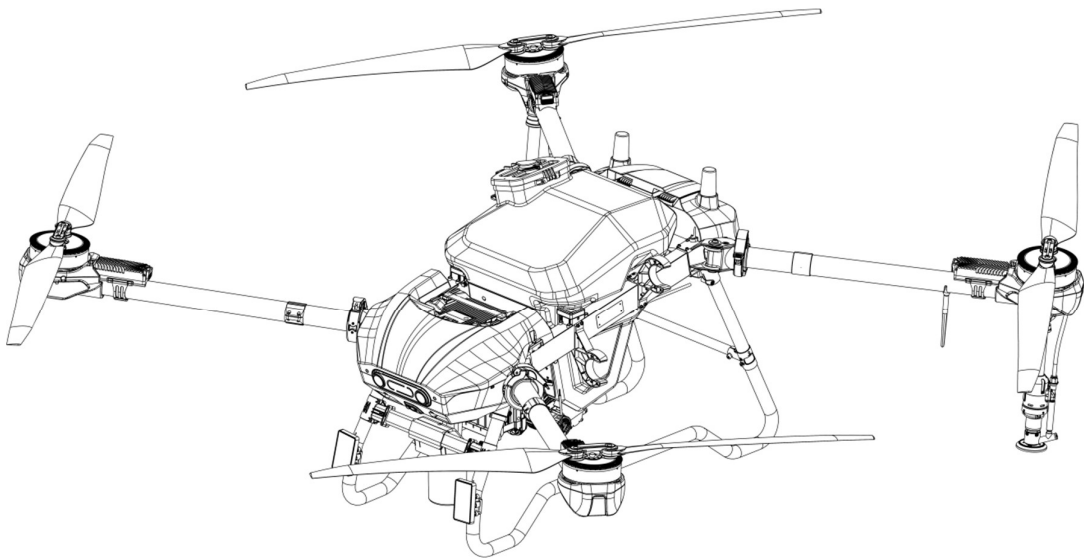


Agricultural Drone Instruction Manual

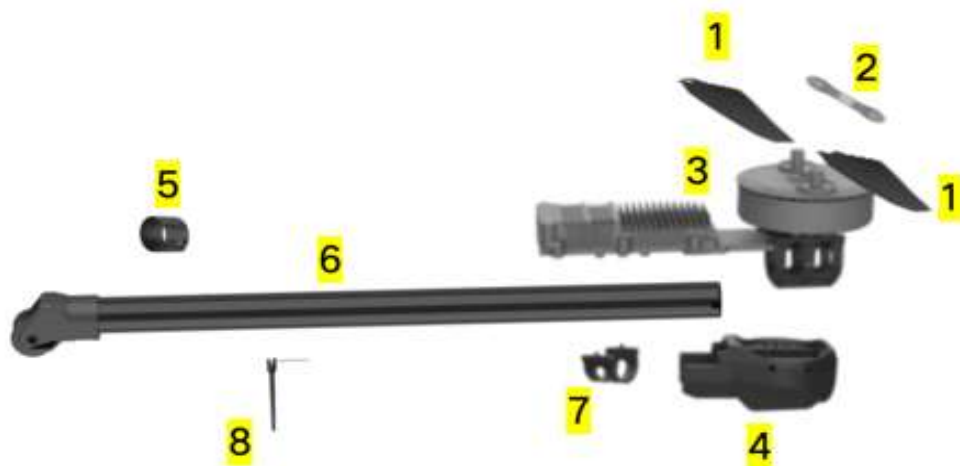
No.3/No.4 Arm

Assembly

Version 1



No.3/No.4 Arm Assembly



Exploded view of arm assembly No.3

Arm assembly No. 3 parts list

No.	Part Name	Part Number	Qty per Unit
1	HD580 Carbon Fiber Reverse Propeller 62-inch	201-001946	1
2	HD580 Upper Prop Clamp M10	201-002160	1
3	HD580 Power set assembly No.2 M10 neutral	758-000102	1
4	HD580 Power motor guard-rear	201-002029	1
5	HD580 Arm wear-resistant ring	201-001797	1
6	HD580 Outer Joint Carbon Tube 2.0 Assembly No.3	128-000805	1
7	HD580 ESC Mount H	201-001865	1
8	HD580 Soft Rubber Video Antenna (New Structure)	128-000318	1



Exploded view of arm assembly No.4

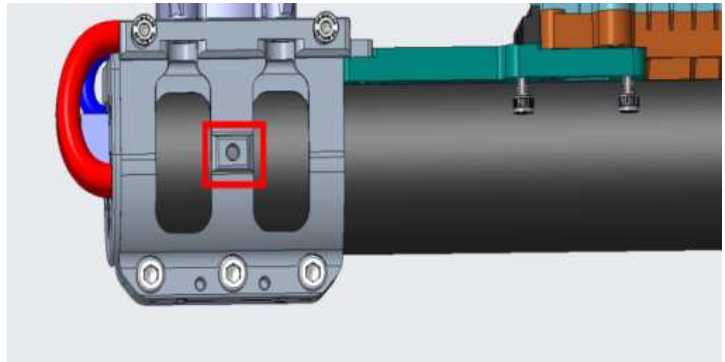
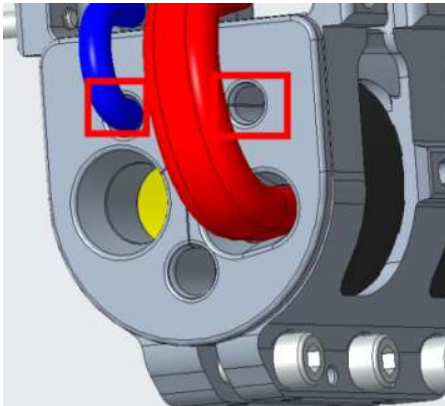
Arm assembly No.4 parts list

No.	Part Name	Part Number	Qty per Unit
1	HD580 Carbon Fiber Normal Propeller 62-inch	201-001945	1
2	HD580 Upper Prop Clamp M10	201-002160	1
3	HD580 Power set assembly No.2 M10 neutral	758-000103	1
4	HD580 Power motor guard-rear	201-002029	1
5	HD580 Arm wear-resistant ring	201-001797	1
6	HD580 Outer Joint Carbon Tube 2.0 Assembly No.4	128-000806	1
7	HD580 ESC bracket H	201-001865	1

1. Pre-assemble power set and arm

First insert power set into carbon tube until fully seated. Then install wiring silicone ring inside arm front end. Next, route ESC signal/power wires through ring holes and out the arm.

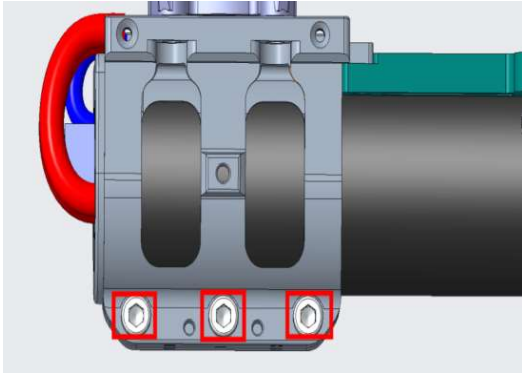
Signal wire routing follows
proximity principle



2 pcs M5_L8-D4-Dowel screw 126-000808 torque: 2.0
 $\pm 0.2\text{NM}$

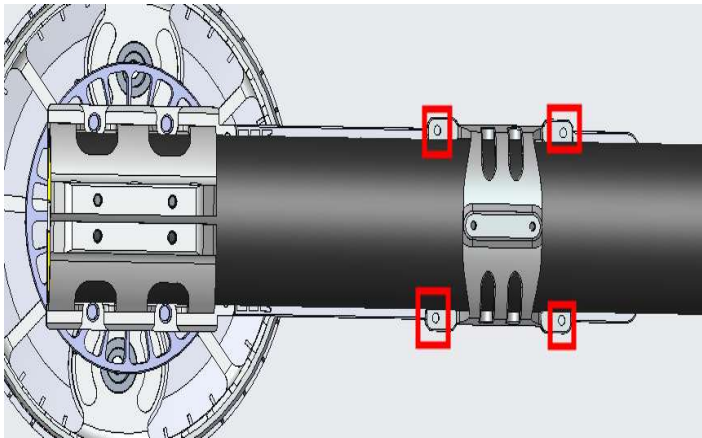
2. Tighten motor bracket

Apply threadlocker (1/3 screw length) to 3 M6*25 carbon steel cup head hex socket knurled machine screws. Tighten with lock washers.



Carbon steel cup head hex socket knurled machine screw, Nord-Lock NL6 lock washer
126-000397 126-000819 torque:
8.0 ~ 9.0NM

3. Connect ESC bracket to ESC



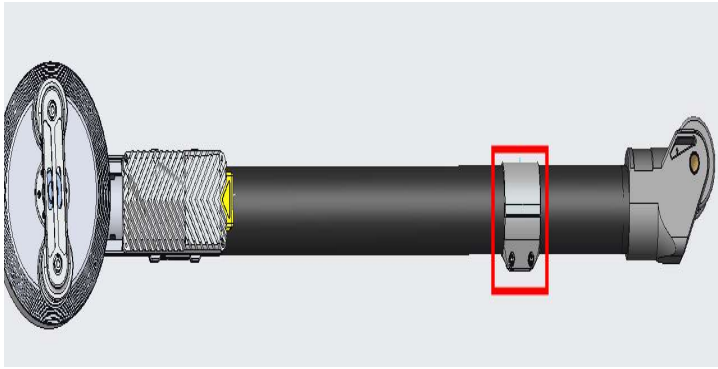
4 pcs M3*16 Stainless steel cup head hex socket knurled machine screw 126-000397
torque: 8.0±0.8NM

4. Assemble wear-resistant ring to arm

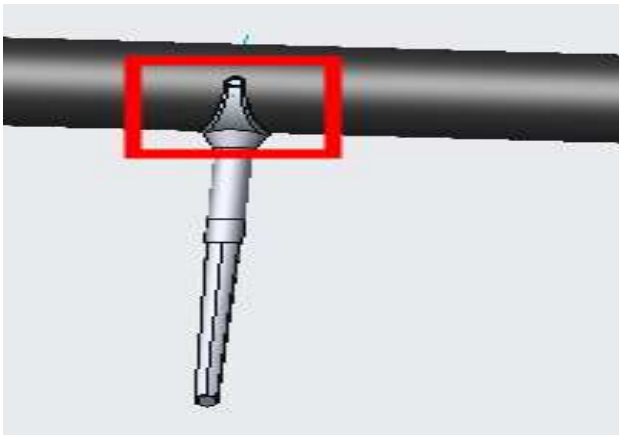
Note: Install wear-resistant ring in correct orientation. Tighten screws downward from top surface.

2 pcs M3*15 Flanged hex socket screw
126-000744

torque: $1.0 \pm 0.1 \text{NM}$



5. Connect the Soft Rubber Video Antenna (New Structure) to the Arm



Pass the Video Antenna cable through the designated hole of the silicone ring. Route it out from the arm joint end, then install the Video Antenna at the prescribed position.